



Manufactured by



SlideControl

Solids Flow Measurement
on Airslides



Use

The SlideControl is a unique solids flowmeter for measuring powder conveyed on air slides. It uses advanced microwave technology and is unaffected by build-up on the sensor face.

Unlike mechanical weigh feeders, belt scales or impact flowmeters, the SlideControl is completely non-contact as it measures from the top of the air slide. There are no maintenance requirements.

It is very easy to install or retrofit existing systems.

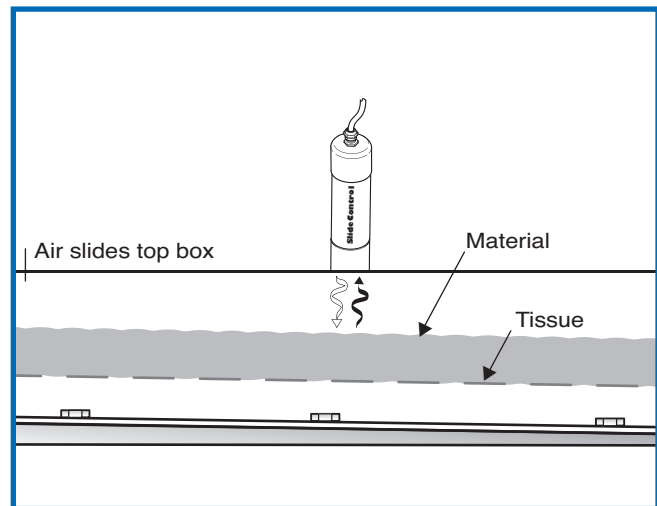


Function

By using microwave technology, the SlideControl measures the distance between the flowing material surface and the sensor. This flowing material height is on the air slide tissue and typically flows at a constant velocity.

A 4...20 mA signal is outputted based on this filling height and appropriate correction factors so a mass flow rate can be computed. If it comes to a standstill, the output signal immediately drops to 4 mA, even if the material is still in the slide.

Basic parameters consists of inputting air slide width and material density.



System

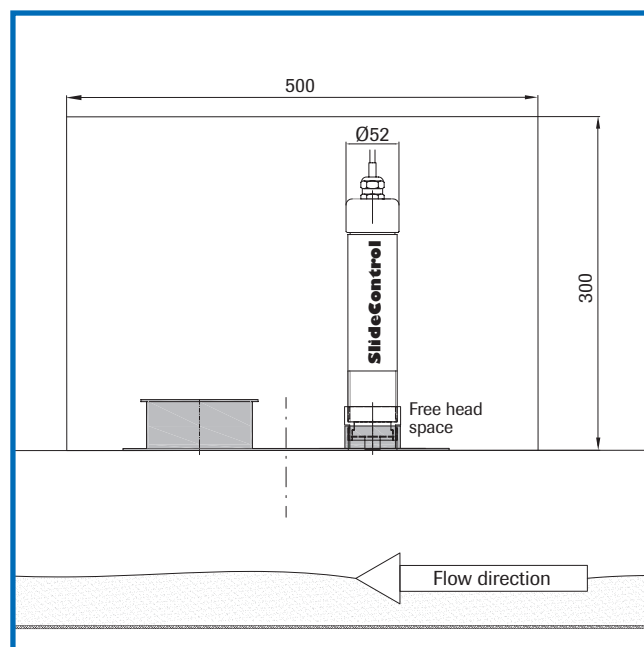
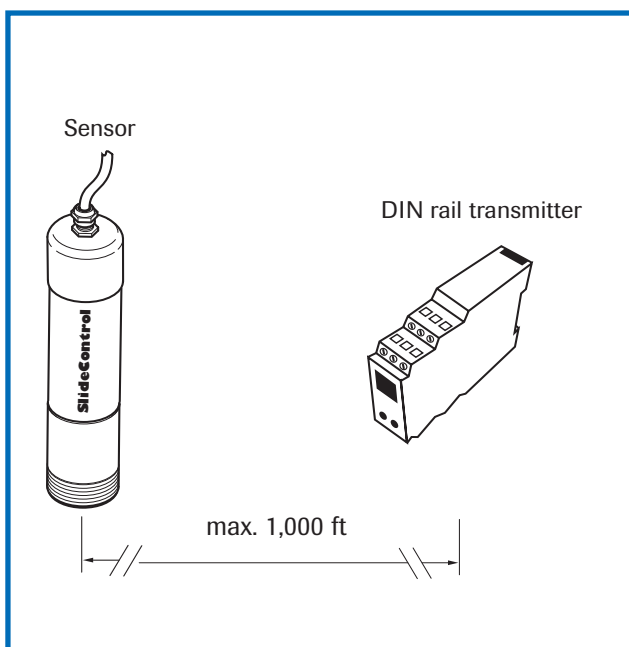
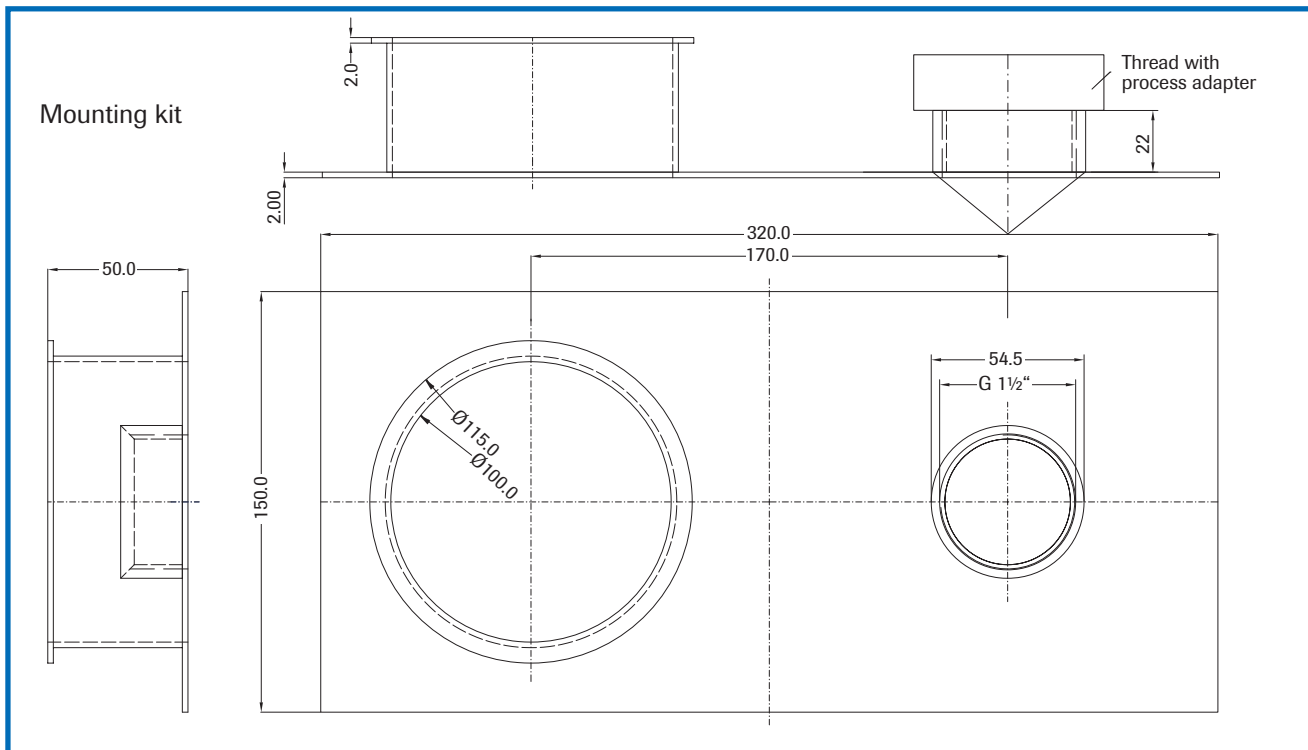
SlideControl consists of a sensor, the transmitter and a mounting kit.

The maximum distance between sensor and transmitter may be up to 1,000 ft.

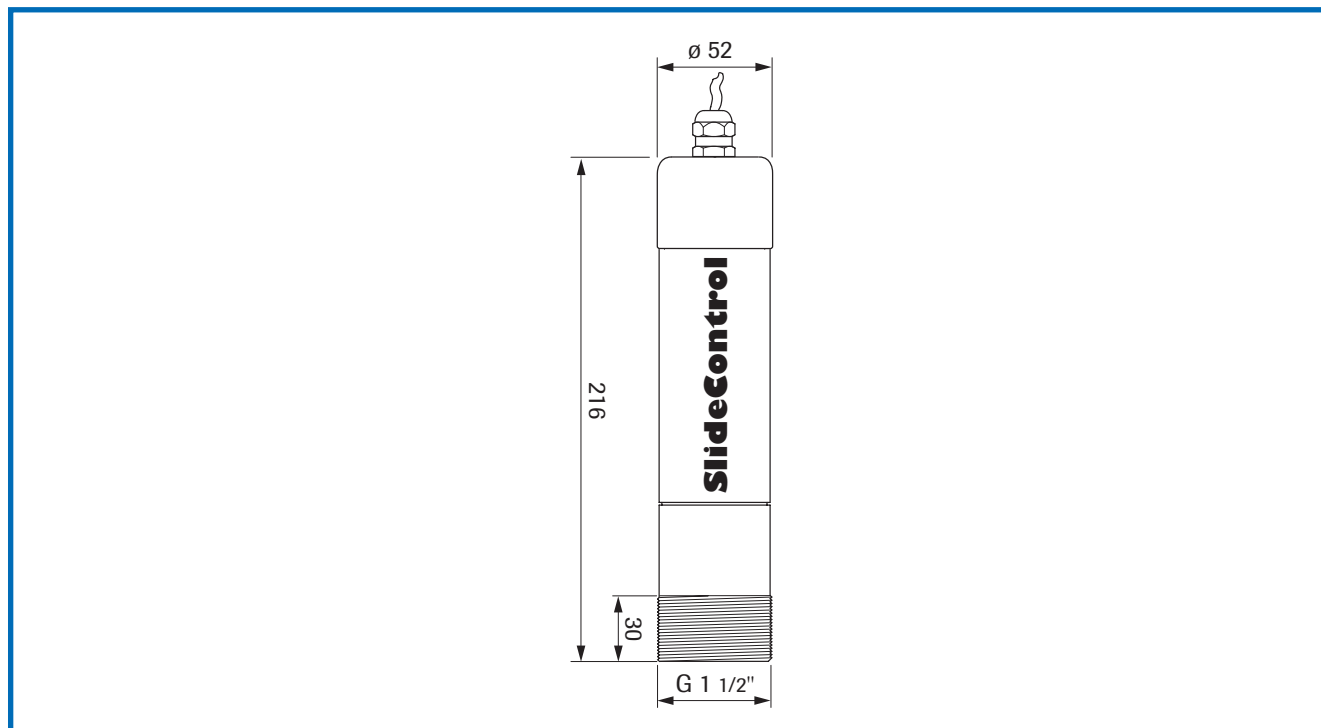
The sensor is powered by the transmitter with 24 VDC.

The associated transmitter is available as DIN rail version or in a field-enclosure with display.

The mechanic installation occurs through the mounting plate, which has a 1 1/2" process connection for the sensor and a second closable opening for inspection and calibration purposes.



Product Information



Technical data

Sensor	
Housing material	Stainless steel 1.4571
Protection type	IP 65
Process temperature	-4...+176 °F -4...+428 °F (with process-adapter)
Ambient temperature	-4...+140 °F
Working pressure	Max. 1 bar
Power supply	18...24 VDC powered by transmitter
Measuring frequency	24.125 GHz; ± 100 MHz
Transmitting power	Max. 5 mW
Weight	2.2 lbs
Dimensions	Enclosure: length of 8.50 in / diameter of 2.04 in
	Thread: length of 1.18 in / diameter of G 1 1/2"

Transmitter (DIN Rail)	
Power supply	24 V DC ± 10 %
Power consumption	20 W / 24 VA
Protection type	IP 40 to EN 60 529
Ambient operating temperature	14...113 °F
Dimensions	0.9 x 3.5 x 4.6 in (W x H x D)
Weight	Approx. 6.06 oz
Screw terminals	0.2 ... 2.5 mm ² [AWG 24 - 14]
Current output signal	4...20 mA (0...20 mA), load < 500 Ω
Alarm output	Relay with switchover contact Max. 250 V AC, 1 A
Digital interface	ModBus RTU, RS 485, RS 232C
Data storage	Flash memory