

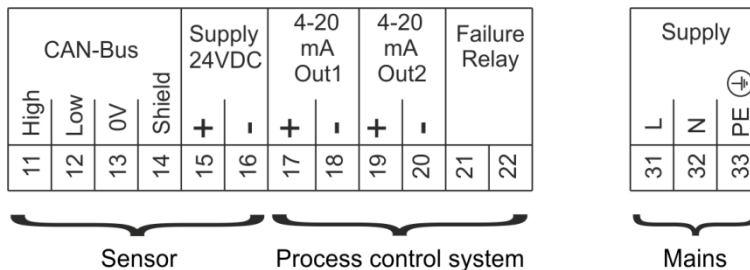
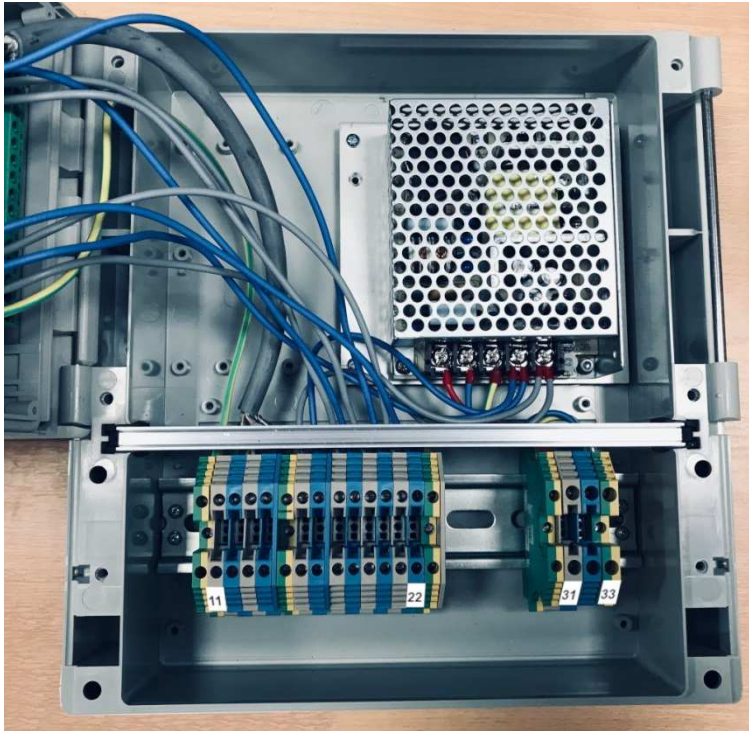
Wall Housing

Service Info

Version 1 / 05/2020



Connection



Don't use the green/yellow terminal for the shield of the CAN-Bus wire.

Electrical Data

Input voltage	88 ... 264 VAC
Input current (max.)	0.8 A continuous at 115 VAC, 0.55 A continuous at 230 VAC, 36 A inrush
Environment temperature	-0 ... +40 °C (32 °F ... +104 °F)
Protection class acc. to DIN EN 60529	IP 66
Enclosure parts	ABS
Crystal-clear lid	Polycarbonate
Heat distortion temperature A (ISO 75)	+80 °C (+176 °F)
Flammability (UL 94)	HB

Opening connection part



Dismantling is possible with a slotted-head screwdriver.

GTS, Inc.
PO Box 799, Shalimar, FL 32579
Phone: 850-651-3388
Fax: 850-651-4777
Email: info@onthelevel.com
Website: www.onthelevel.com