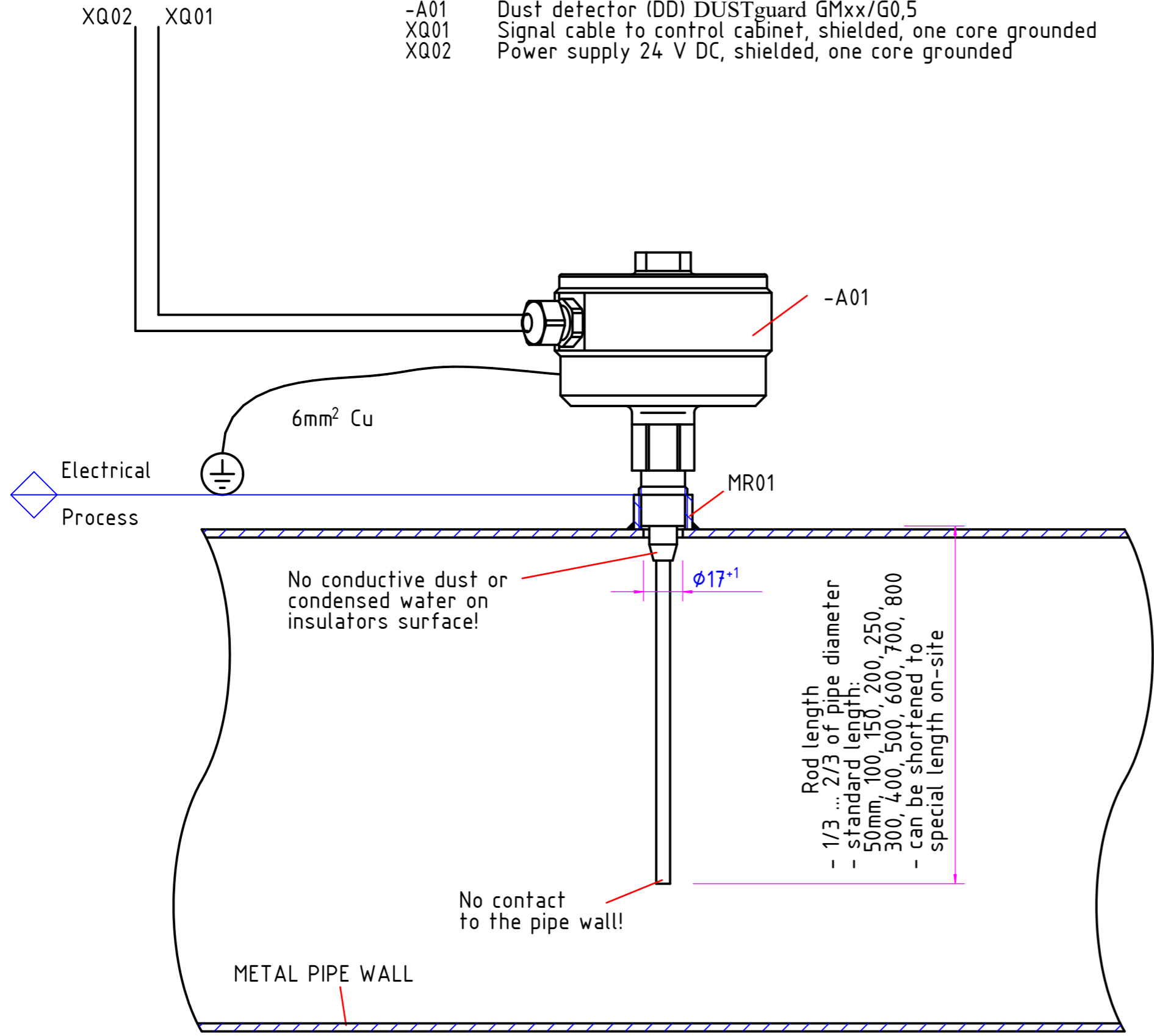
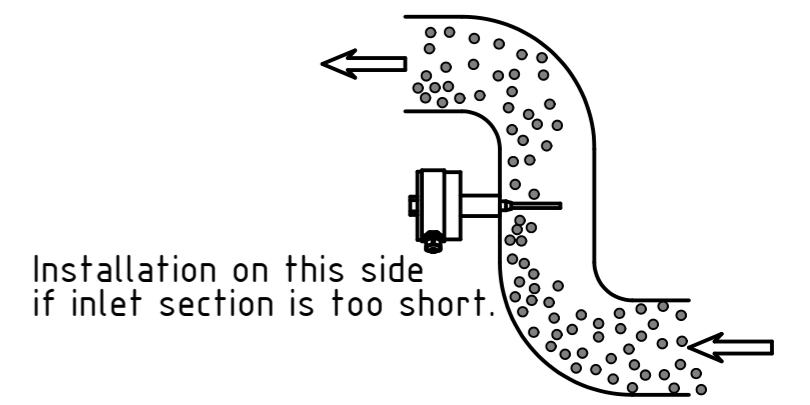
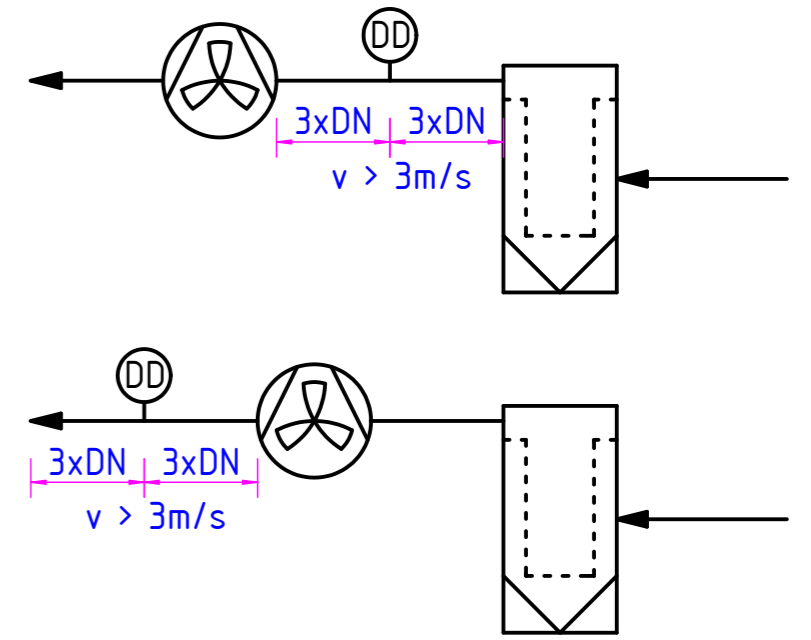


- MR01 Weld-on-nozzle L=15mm, G½" inside
- A01 Dust detector (DD) DUSTguard GMxx/G0,5
- XQ01 Signal cable to control cabinet, shielded, one core grounded
- XQ02 Power supply 24 V DC, shielded, one core grounded



Standard installation location

- min. 3 x DN straight metal inlet and outlet section without any disturbing parts as elbows, bends, moving parts...
- avoid strong vibrations
- side mounting at hot pipes



Installation on this side if inlet section is too short.

00	First Issue	12.01.22	RN
Rev.	Modification	Date	Name
Scale	1:2	Size	DIN A3
Title of Project Sample Project			
Title of Drawing DUSTguard GMxx/G0,5			
Drawing No	22011201_02	Page 1 of 1	

On this drawing we reserve the legal copyright. Without our prior consent this drawing may not be copied or made available to third and may not be missed in any way by the recipient or third parties.